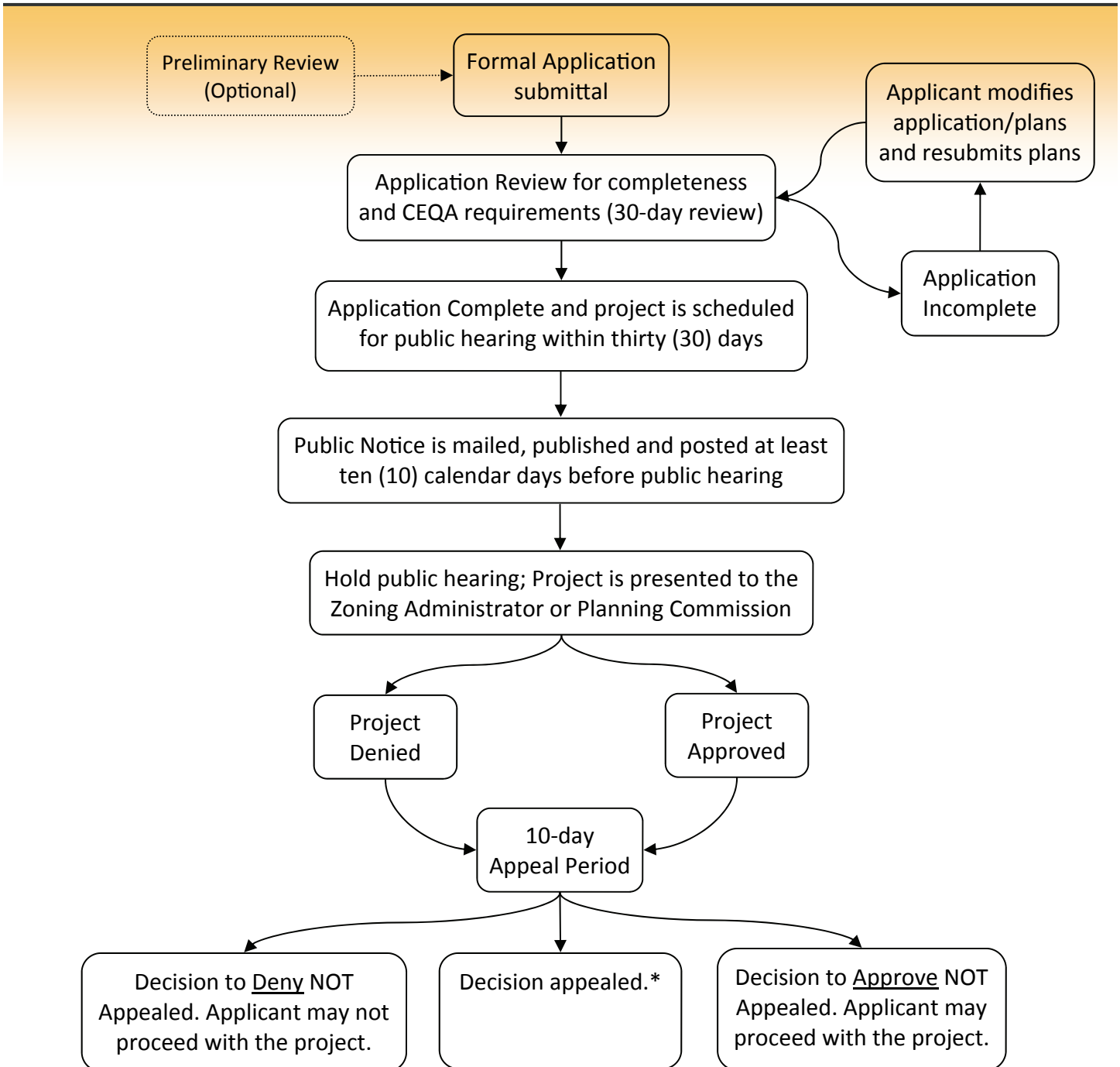




Entitlement Process Flowchart For Projects that Require Zoning Administrator or Planning Commission Public Hearing

The flowchart shown below is a general overview of the entitlement process for applications (Conditional Use Permits, Design Review, Variances, etc.) that require Zoning Administrator or Planning Commission hearings. Additional steps may be required based on the project specifics and type of entitlement requested.



*Note: Director/Zoning Administrator actions are appealable to the Planning Commission. Planning Commission actions are appealable to the City Council. City Council actions are final.