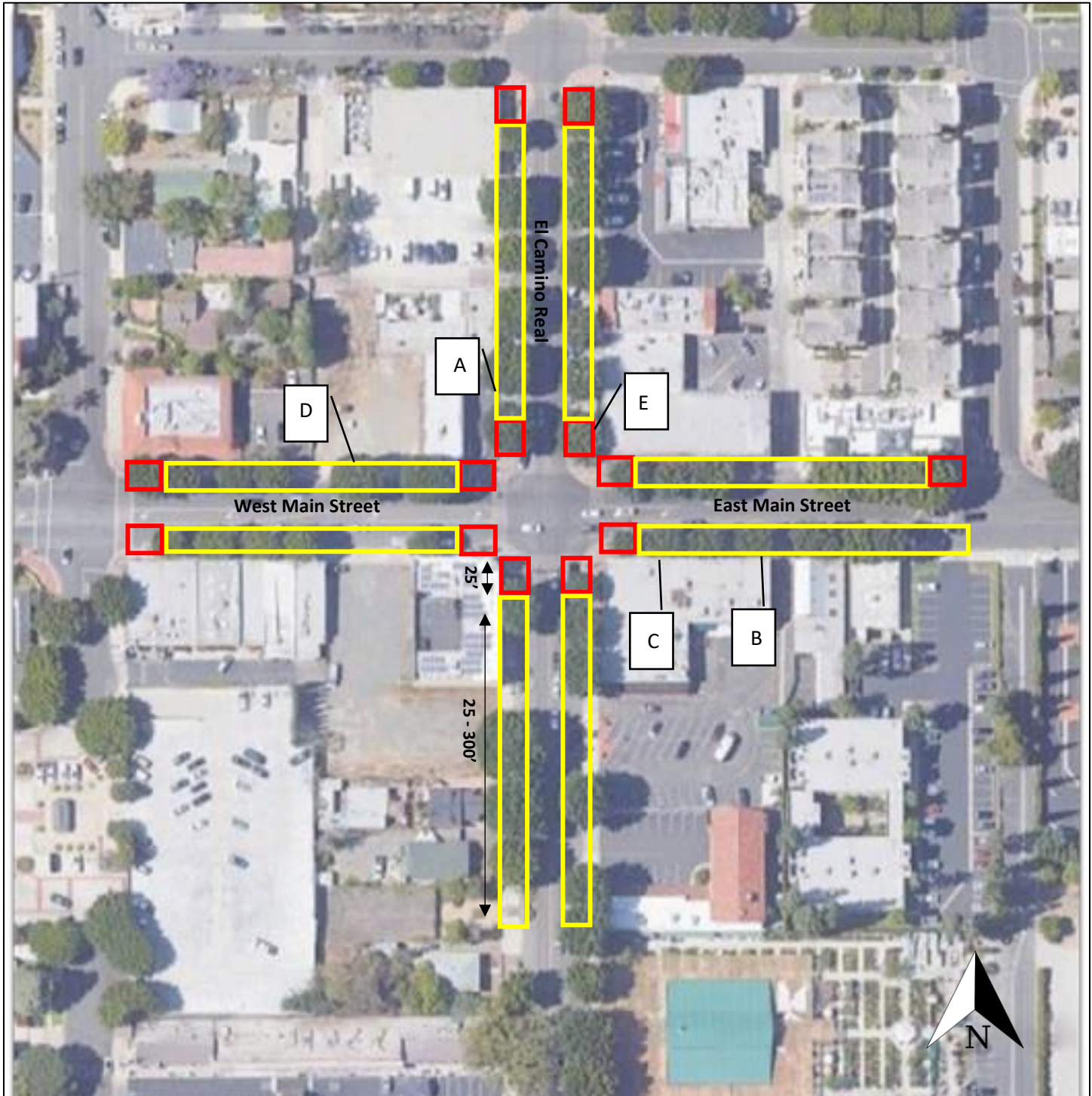


**Non-Commercial Signs in the Public Right-of-Way:
Acceptable and Unacceptable Locations in the Old Town Commercial Core**



Legend:

- 25' from Intersection Not Allowed
- Acceptable Signs on Parkway between 25' and 300' from Intersection (Except within 10' from Driveway) *
- A \ See Example Photographs on Page 3

*Distance is measured from property line rather than curb

**Non-Commercial Signs in the Public Right-of-Way:
Acceptable and Unacceptable Locations in the El Camino Real and Main Street Intersection**



Legend:

- Signs Allowed in Tree Wells & Parkways 25'-300' from Intersection
(Except within 10' from Driveway)
- Signs Not Allowed 10' from Driveway or 25' from Intersection



Examples of Acceptable & Unacceptable Locations

Example A



Example B



Example C





Example D



Example E



Legend:

-  Example of 10' from Driveway or 25' from Intersection Not Allowed *
-  Example of Acceptable Locations for Signs between 25' and 300' from Intersection *

* Distance is measured from property line rather than curb