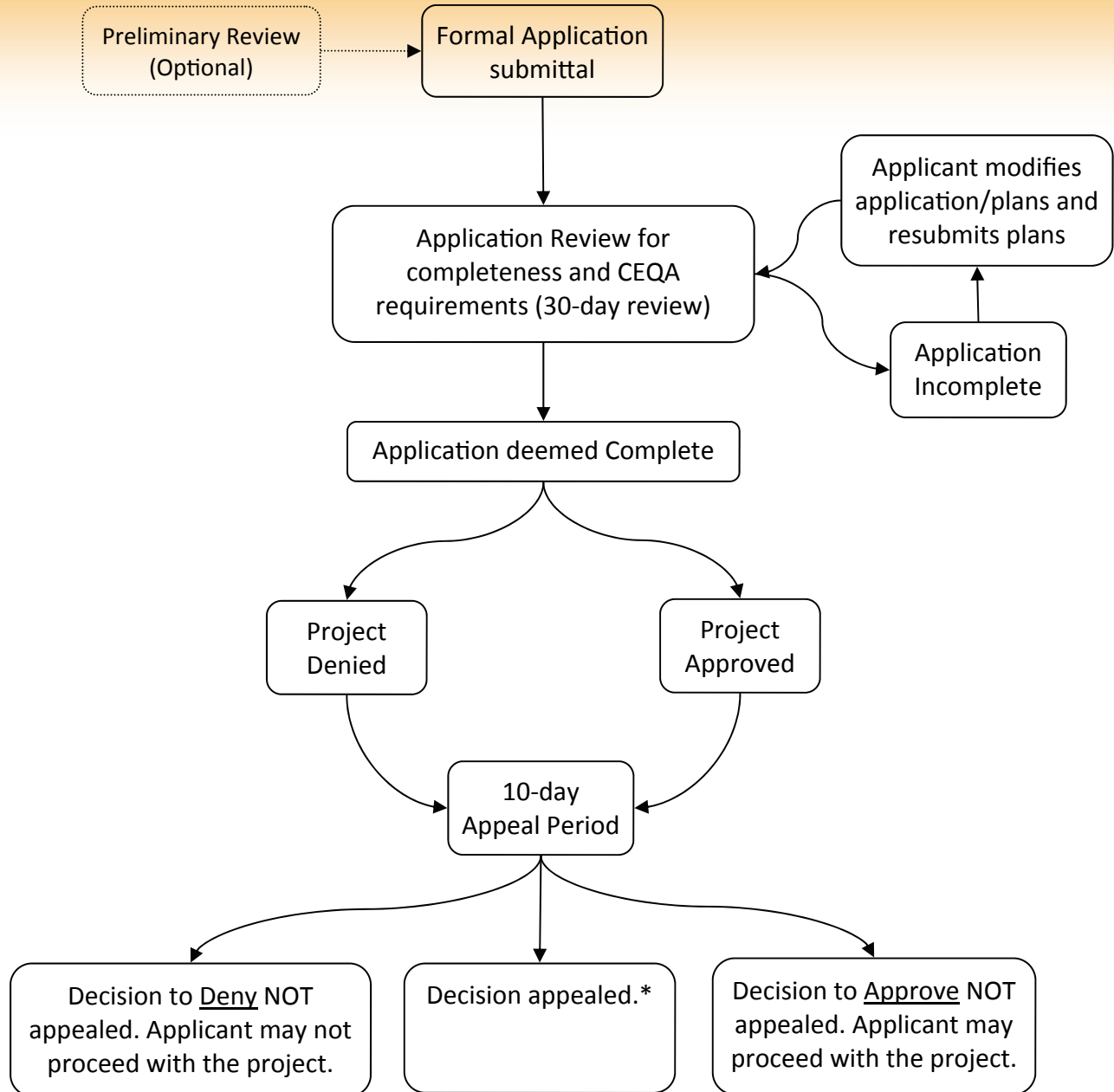




Entitlement Process Flowchart for Design Review Applications with no public hearing

The flowchart shown below is a general overview of the entitlement process for a Design Review application that does not require a public hearing (e.g. the project is a stand-alone Design Review and not associated with additional entitlements such as Conditional Use Permit, Subdivision Map, etc.). Additional steps may be required based on the project specifics.



*Note: Director/Zoning Administrator actions are appealable to the Planning Commission. Planning Commission actions are appealable to the City Council. City Council actions are final.